

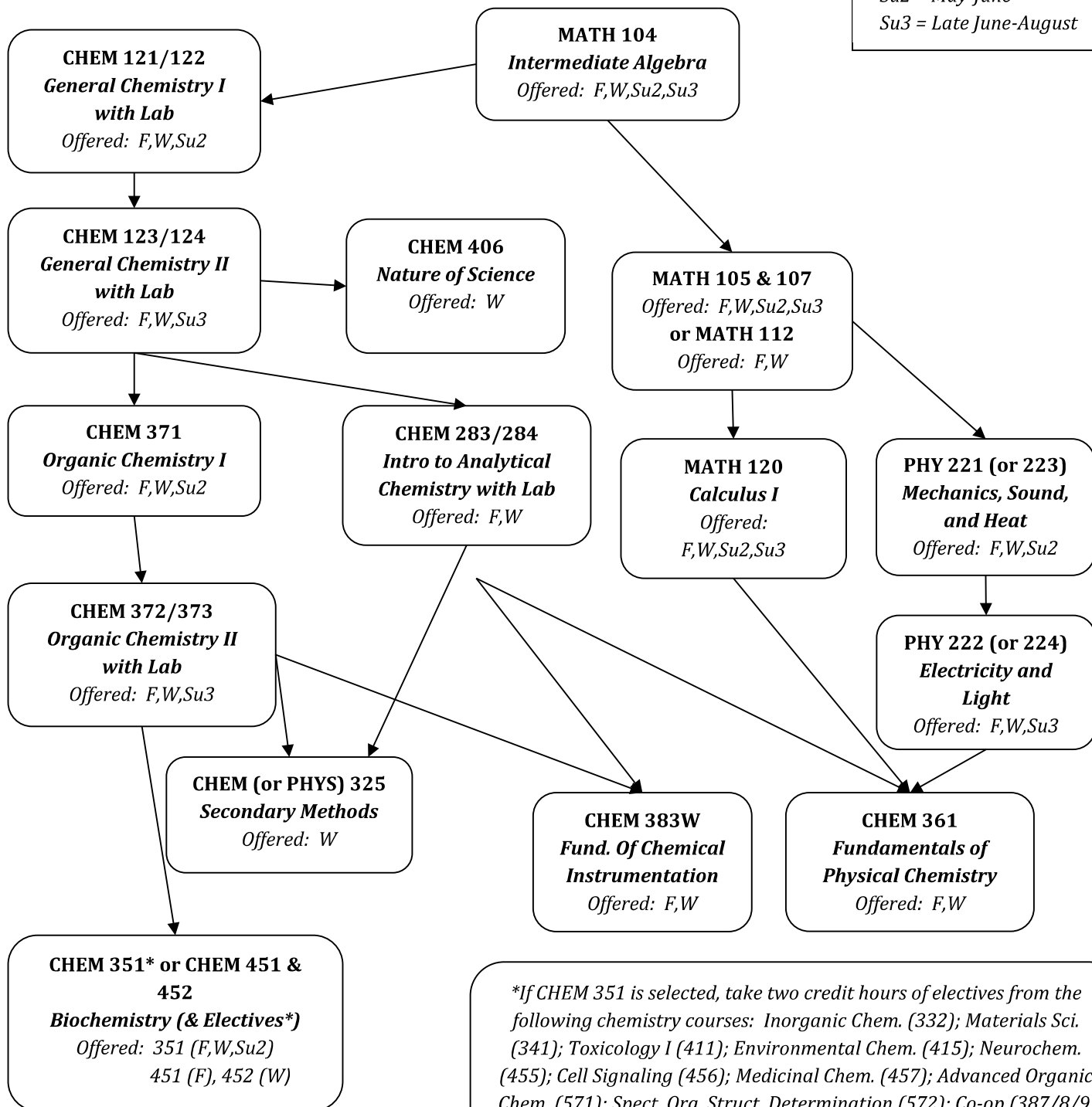
Sequence of Courses for Secondary Education Chemistry Major

Effective Fall 2016

Updated: September 2018

Su2 = May-June

Su3 = Late June-August



*If CHEM 351 is selected, take two credit hours of electives from the following chemistry courses: Inorganic Chem. (332); Materials Sci. (341); Toxicology I (411); Environmental Chem. (415); Neurochem. (455); Cell Signaling (456); Medicinal Chem. (457); Advanced Organic Chem. (571); Spect. Org. Struct. Determination (572); Co-op (387/8/9, 487/8/9); Undergraduate Research (397/8/9, 497/8/9).