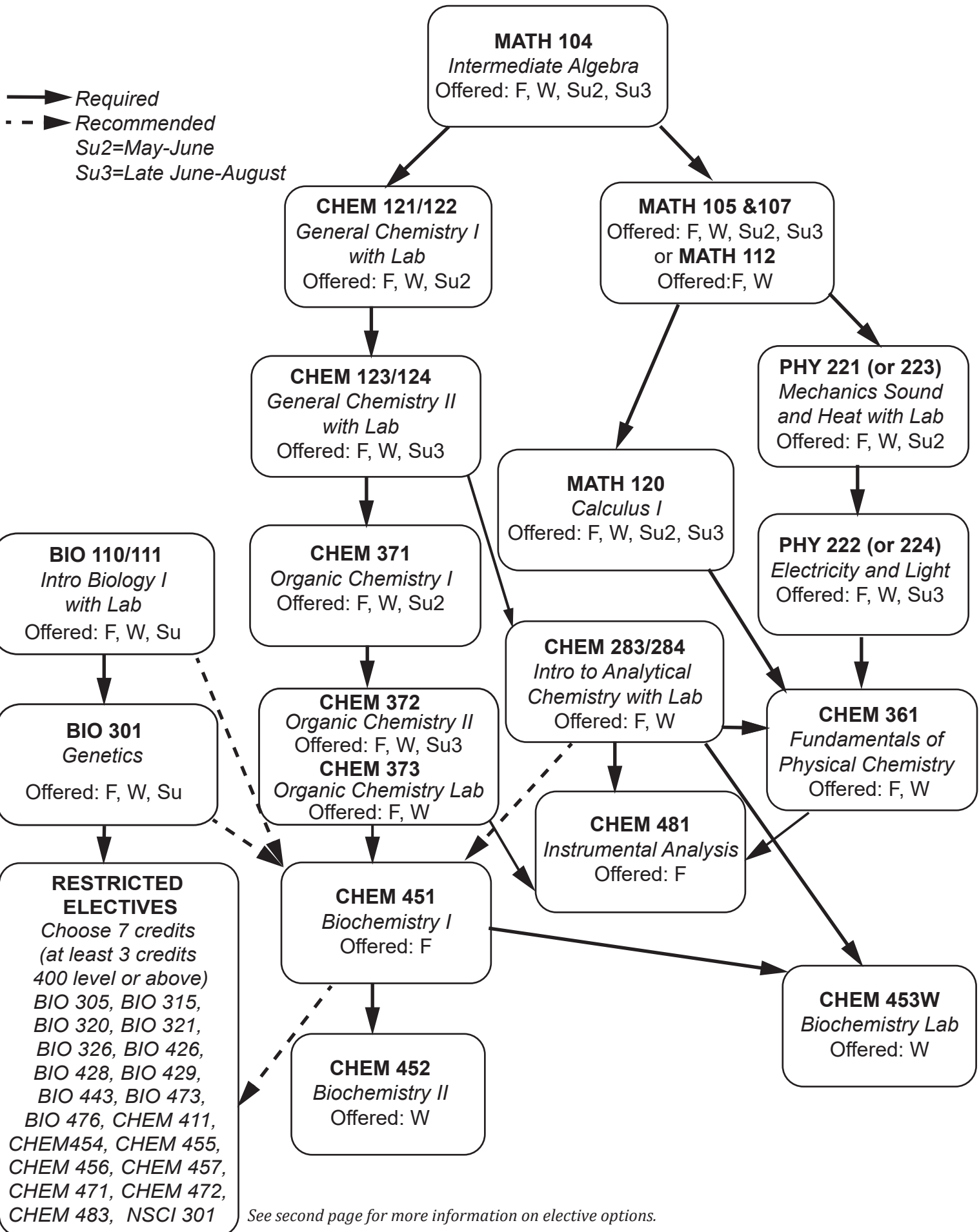


Biochemistry Major

Concentration: General

Sequence of Courses



Elective Options for the Biochemistry Major

Effective Fall 2022

Updated: April 2022

Concentration: General

A total of 7 credits of electives are required, at least 3 of which must be at the 400 level. Pay attention to prerequisites and offering patterns to make sure that you are able to take the classes you want and graduate on time.

(F) = Offered every fall

(F-E) = Offered fall of even years

(F-O) = Offered fall of odd years

(W) = Offered every winter

(W-E) = Offered winter of even years

(W-O) = Offered winter of odd years

Recommended 300-level courses

BIO 305 *Cell Biology (F,W,S) 3 hrs*

BIO 320 *General Microbiology - lecture (F,W) 3 hrs*

BIO 321 *General microbiology - lab (F,W) 2 hrs*

NSCI 301 *Introduction to Neuroscience (F) 3 hrs*

300-level courses requiring additional prerequisites not required for the major

BIO 315 *Evolution (F,W,S) 3 hrs - requires BIO120/121 as a prereq*

BIO 326 *Human Physiology (F,W,S) 3 hrs - requires BIO120/121 or BIO252 as a prereq*

400-level courses requiring CHEM451 as a prerequisite

CHEM 454 *Protein Structure and Function (W-O) 3hrs*

CHEM 455 *Neurochemistry (F) 3 hrs*

CHEM 456 *Cell Signaling (W-E) 3 hrs*

400-level courses requiring BIO305 as a prerequisite

BIO 443 *Developmental Biology (W) 3hrs*

BIO 473 *Concepts in Animal Physiology (F) 4 hrs*

BIO 476 *Mammalian Histology (F) 4 hrs - also accepts BIO252 or BIO326 as a prereq*

400-level courses requiring BIO320 as a prerequisite

BIO 426 *Immunobiology (W) 3hrs*

BIO 428 *General Virology (F) 3 hrs*

BIO 429 *Bacterial Pathogenesis (F-E) 3 hrs*

Additional 400-level course options

CHEM 411 *Toxicology (F-E) 2hrs*

CHEM 471 *Advanced Organic Chemistry (F-E) 3 hrs*

CHEM 472 *Spectrometric Organic Structure Determination (F-O) 3 hrs*

CHEM 483 *Instrumentation Lab (F, W) 2hrs - take with or after CHEM481*

Note that CHEM457 and CHEM551 are not currently being regularly offered, which is why they are not included here even though they are eligible electives.