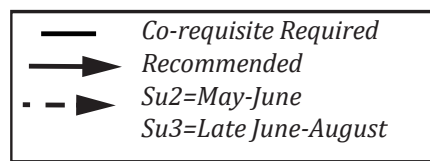


Chemistry Major

Concentration: Research

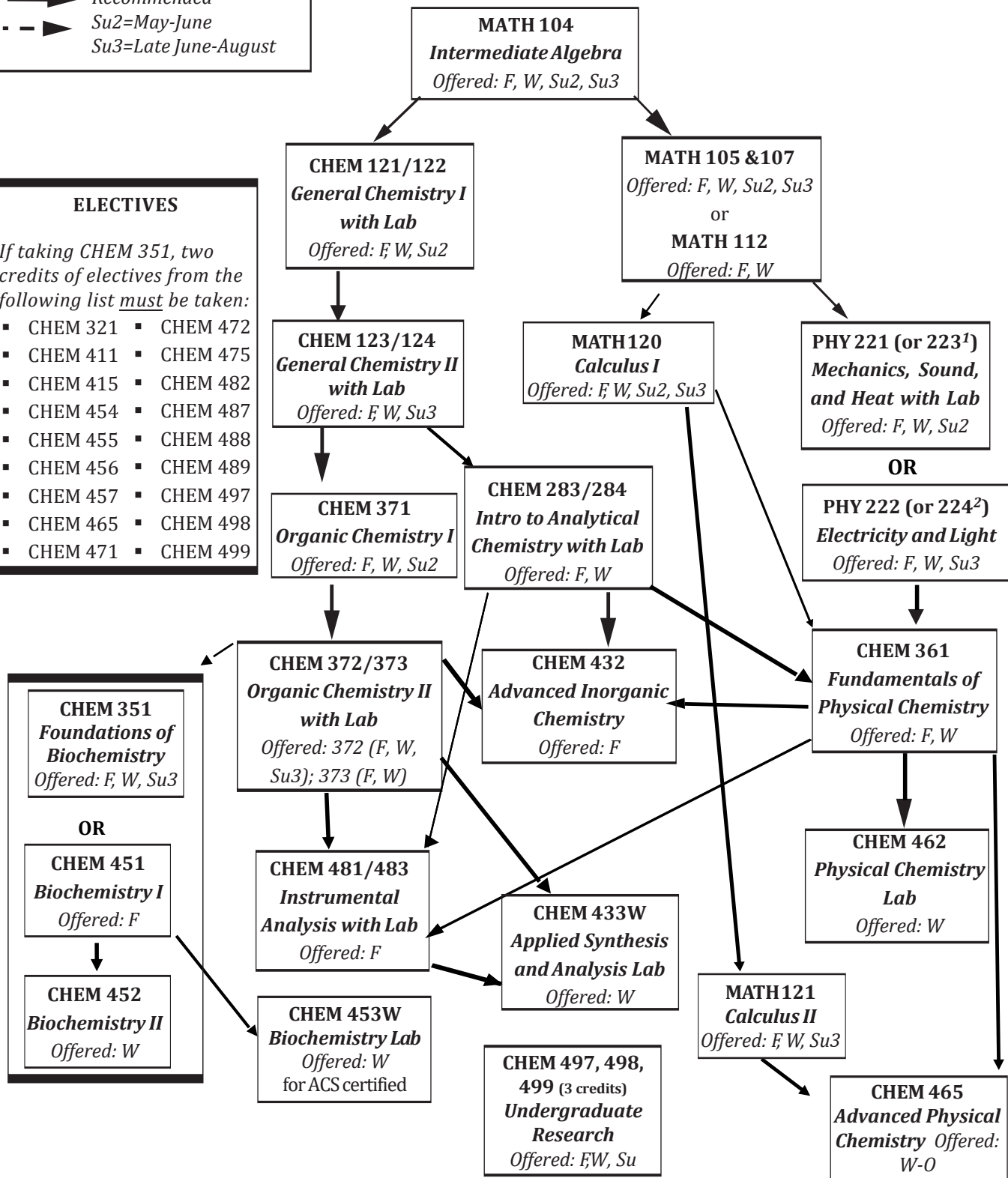
Sequence of Courses



ELECTIVES

If taking CHEM 351, two credits of electives from the following list must be taken:

▪ CHEM 321	▪ CHEM 472
▪ CHEM 411	▪ CHEM 475
▪ CHEM 415	▪ CHEM 482
▪ CHEM 454	▪ CHEM 487
▪ CHEM 455	▪ CHEM 488
▪ CHEM 456	▪ CHEM 489
▪ CHEM 457	▪ CHEM 497
▪ CHEM 465	▪ CHEM 498
▪ CHEM 471	▪ CHEM 499



NOTES:

- MATH 120 is a pre-requisite for PHY 223
- MATH 121 is a pre-requisite for PHY 224.
- FERM 101 is a pre-requisite for elective advanced FERM courses.

Elective Options for the Chemistry Major

Effective Fall 2022

Concentration: Research

Updated: Feb. 2022

Either take CHEM 451 with CHEM 452 and nine(9) hours from the following or CHEM 351 and eleven (11) hours from the following:

(F) = Offered every fall

(F-E) = Offered fall of even years

(F-O) = Offered fall of odd years

(SU) = Offered every summer

(W) = Offered every winter

(W-E) = Offered winter of even years

(W-O) = Offered winter of odd years

(NR) = Not regularly offered

BIOCHEMISTRY COURSES

CHEM 411 Toxicology I (F) 2 hrs

CHEM 454 Protein Structure and Function (W-O) 3 hrs

CHEM 455 Neurochemistry (F) 3 hrs

CHEM 456 Cell Signaling (W-E) 3 hrs

**CHEM 457 Medicinal Chemistry and
Drug Design (W-O)** 3 hrs

OTHER CHEMISTRY COURSES

CHEM 321 Sensory Analysis of Fermented Products (W-O) 2 hrs

CHEM 415 Environmental Chemistry (F) 3 hrs

CHEM 465 Quantum and Statistical Mechanics (W-O) 3 hrs

Pre-requisite: MATH 121

CHEM 471 Advanced Organic Chemistry (W-O) 3 hrs

CHEM 472 Spectrometric Organic Structure Determination (F-O) 3 hrs

CHEM 475 Introduction to Polymer Chemistry (NR) 3 hrs

CHEM 482 Archaeological Chemistry (W-O) 3 hrs