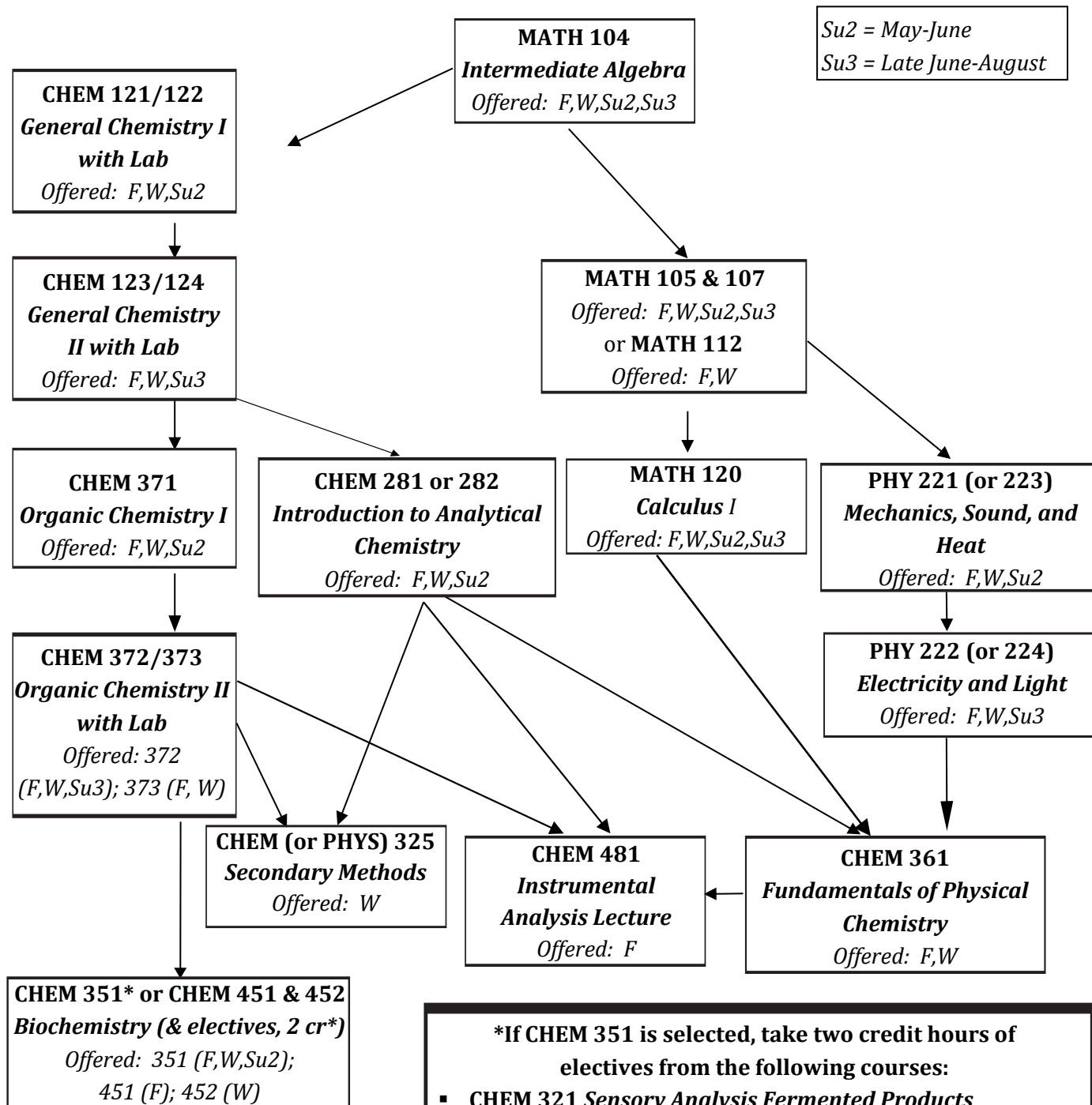


Sequence of Courses for Secondary Education Chemistry Major

Effective Fall 2022

Updated: Feb. 2022

Su2 = May-June
Su3 = Late June-August



*If CHEM 351 is selected, take two credit hours of electives from the following courses:

- CHEM 321 Sensory Analysis Fermented Products
- CHEM 332 Inorganic Chemistry
- CHEM 341 Materials Science
- CHEM 387/8/9 Co-op
- CHEM 397/8/9|497/8/9 Undergraduate Research
- CHEM 411 Toxicology I
- CHEM 415 Environmental Chemistry
- CHEM 455 Neurochemistry
- CHEM 456 Cell Signaling
- CHEM 457 Medicinal Chemistry
- CHEM 571 Advanced Organic Chem.
- CHEM 572 Spectrometric Organic Structure Determination